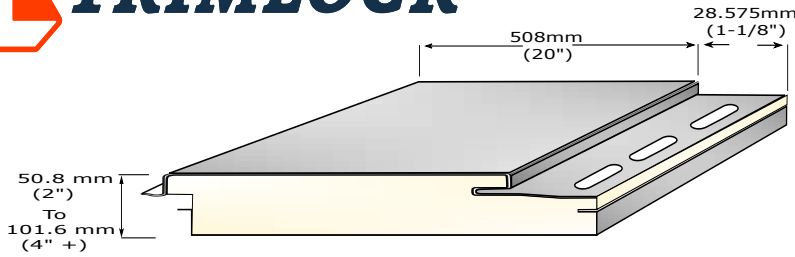




IMP

**Sandwich Panel
Smooth or Pleated**



Standard Features

Steel Cladding	Core Thickness	R-Value	Weight
G90-gr33 24 gauge Galvanize Mill Coated Color	50.8mm (2")	RSI 1.4088 (R 8)	21.9 kg
	63.5mm (2.5")	RSI 1.629 (R 9.25)	22.68 kg
	76.2 mm (3")	RSI 2.1132 (R 12)	23.46 kg
	101.6mm (4")	RSI 2.8176 (R 16)	25.02kg



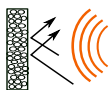
Standard Panel size 508mm (20") x 3657.6mm (144") coverage 1.858 sq/meters (20 sq/ft)
Panel with can range from 8" up to 20" wide (with or without reveal)

Higher R-Value and insulation thickness available upon request

Steel Cladding	26ga Galvannealed steel G90 gr33 / 24ga Galvalume steel gr50
Insulation	EPS bead board
Coatings	Water-borne Acrylic Polyurethane Enamel (Variable Substrate Technology)
Supporting Trim	55% Aluminum-Zinc Coated Steel ASTM 792 SMP Pre-painted Steel AZ50 Substrate
Install	Horizontal / Vertical



Classifications CAN/ULC-S701
CCMC 12424-L
CCMC 12425-L
CCMC 12426-L
ICC-ES ESR-1587
ASTM E413-16 STC 25 Sound Transmission
ASTM E90-09 OITC 25 Sound Transmission
ASTM E330-14 Uniform Proof Load 2080 Pa (43.5 psf) Free standing perimeter fastening



Sound Suppression



Thermal *Insulation*



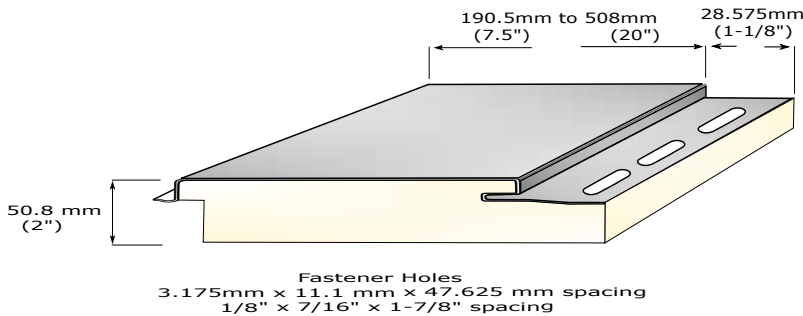
Energy Saving



Ph: 587-425-2400
office@trimlock.ca
www.trimlock.ca
#3-731- 30th Street North
Lethbridge AB T1H 5G5



Single IMP Interlock Cladding



Standard Features

Core Thickness	Steel Cladding	R-Value	Weight
50.8mm (2")	G90-gr33 26 gauge Galvanize	RSI 1.4088 (R 8)	12.9 kg

Higher R-Value and insulation thickness available upon request

Classifications / Configuration

Standard Panel size 508mm (20") x 3657.6mm (144") coverage 1.858 sq/meters (20 sq/ft)
Panel with can range from 8" up to 20" wide (with or without reveal)

Steel Cladding 26ga Galvannealed steel G90 gr33 / 24ga Galvalume steel gr50

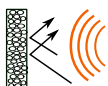
Insulation EPS bead board

Coatings Water-borne Acrylic Polyurethane Enamel (Variable Substrate Technology)

Supporting Trim 55% Aluminum-Zinc Coated Steel ASTM 792
SMP Pre-painted Steel AZ50 Substrate

Install Horizontal / Vertical

Classifications CAN/ULC-S701
CCMC 12424-L
CCMC 12425-L
CCMC 12426-L
ICC-ES ESR-1587



Sound Suppression



Thermal Insulation



Energy Saving



Ph: 587-425-2400
office@trimlock.ca
www.trimlock.ca
#3-731- 30th Street North
Lethbridge AB T1H 5G5